

VIVOTEK Bullet Series

J-Mount Bracket

Installation Guide

Using AM-11C J-mount bracket



Rev. 1.0

Accessory ordering part no.: 900029400G_
V01

Part no.: 625032000G

Revision History:

* Rev. 1.0: Initial Release

AM-11C Dimensions and weight

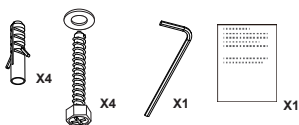
400 x 222.2 x 90mm, 1.2KG

I Compatible VIVOTEK Cameras

IP8355H, IP8355EH, IP8365H, IP8365EH, IP8371, IP8371E, IB8373-EH, IP8372, IB8381, IB8381-E

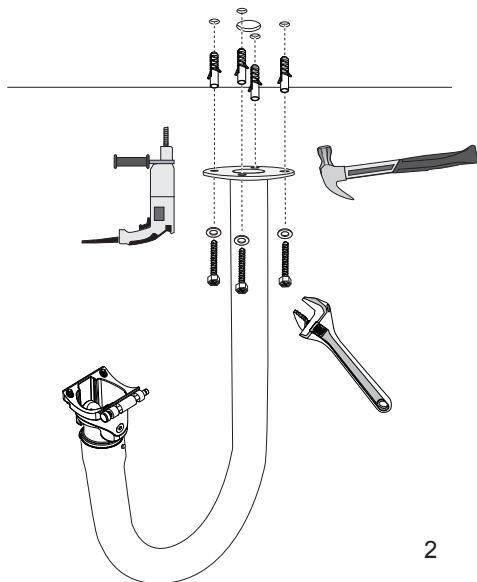
You may also refer to VIVOTEK's website for the list of supported models. Support for other models can be available through time.

Package Contents: AM-11C, Installation Guide, screw pack, 1x hex wrench.

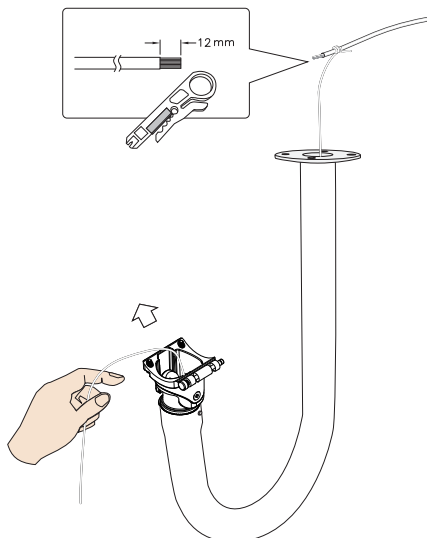


II Installation

1. Use the mounting holes on the bracket to mark the drill positions on ceiling. Drill screw holes and a routing hole on ceiling. Hammer the anchors into the ceiling and install the bracket using the included hex head screws and washers.

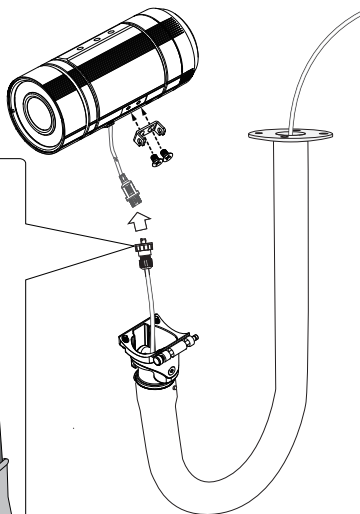
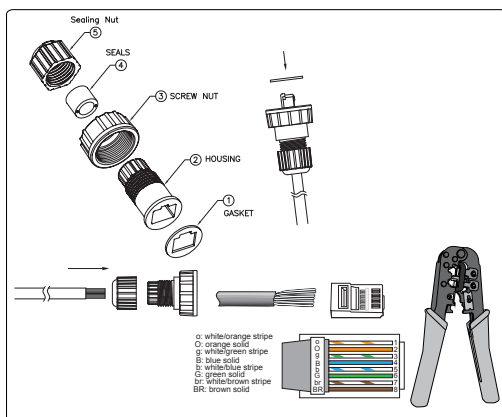


2. Prepare an Ethernet CAT5e cable and strip part of the cable sheath. Pass the cable through the bracket using a pull string

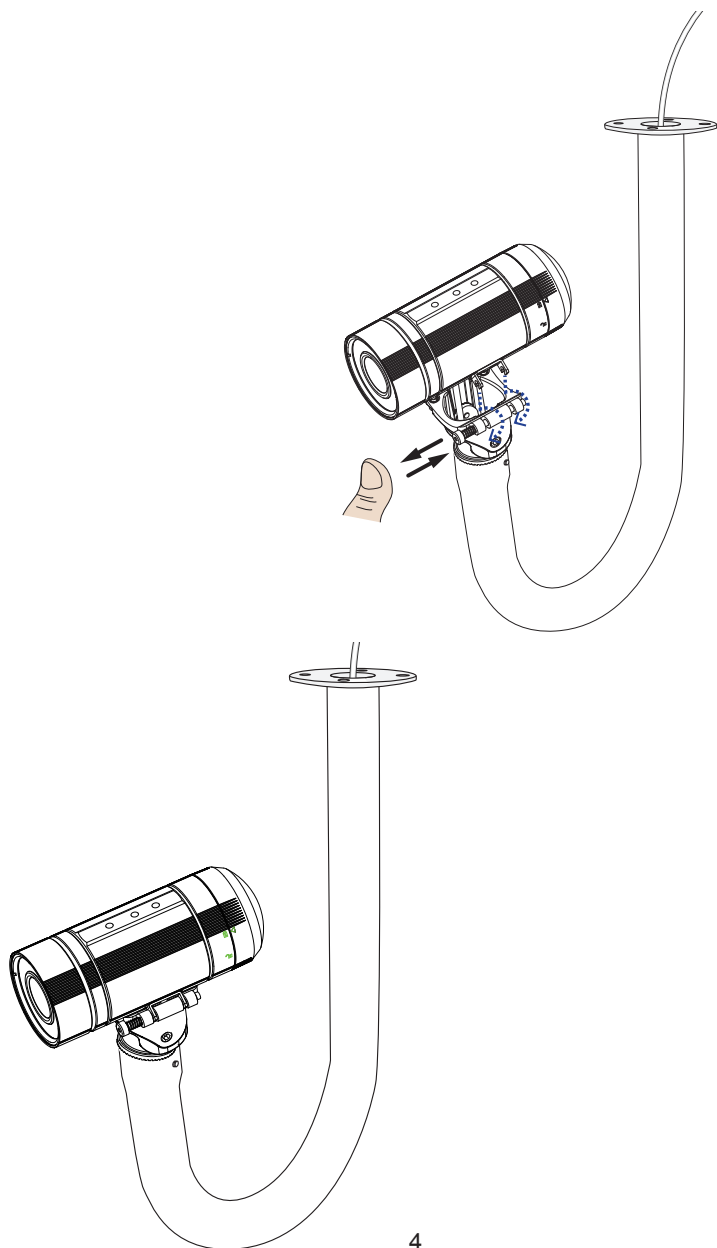


3. Fasten an intersection bracket to the side of camera. Use the included cable gland to make sure the Ethernet connection is waterproof. Pass the cable through the waterproof components, and use a crimping tool to attach to an RJ45 connector.

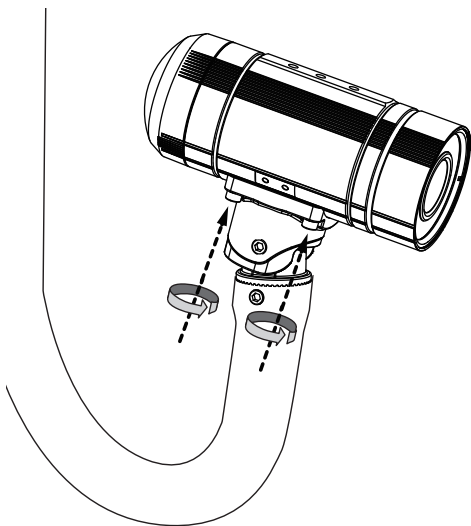
When done, connect the RJ45 connector and tighten up the waterproof cable gland.



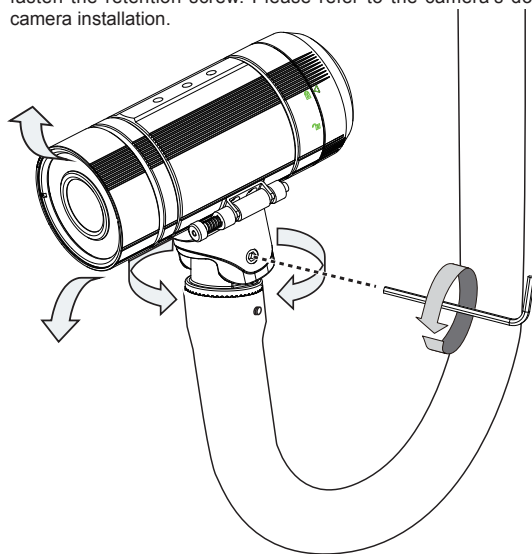
4. Push the spring mortise and hook the bracket onto the groove on the ceiling mount bracket.



5. Secure the installation by fastening two socket screws on the other side of the camera.



6. Loosen the socket screws on the bracket to adjust the camera's shooting direction. When done, fasten the retention screw. Please refer to the camera's documentation for more details about camera installation.



This page is intentionally left blank.

This page is intentionally left blank.

This page is intentionally left blank.